

MATERIALS AND FINISHES

BODY, COUPLING NUT, CAP STAINLESS STEEL
PASSIVATED

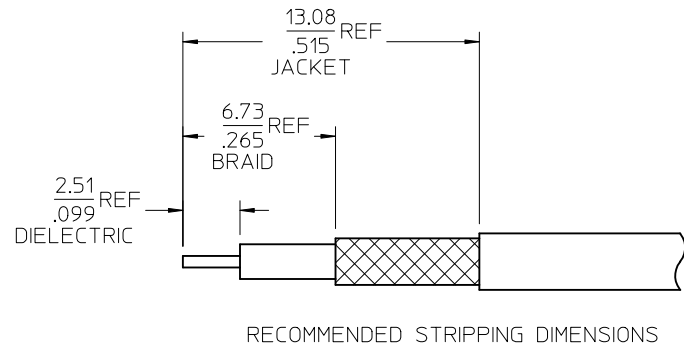
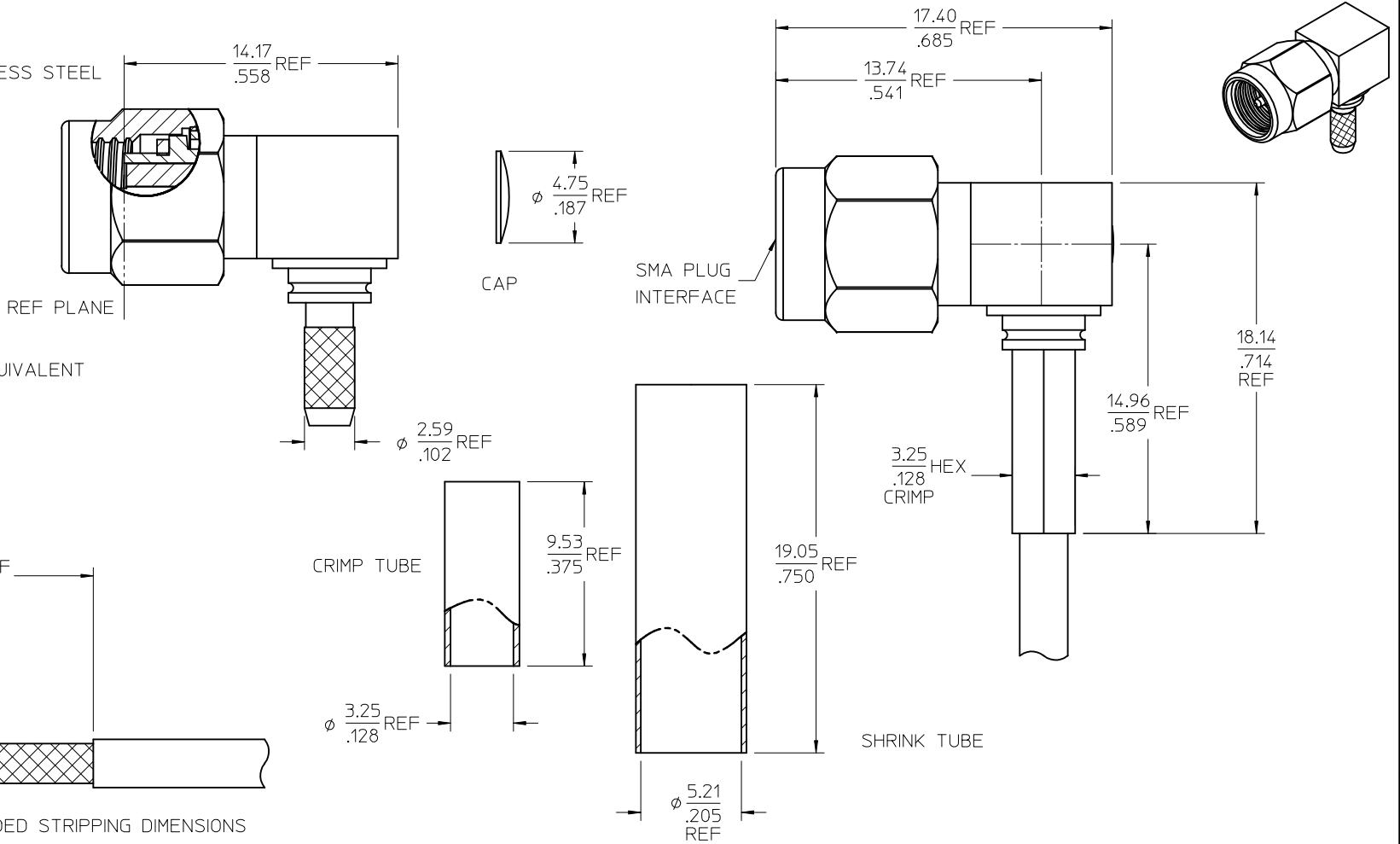
CENTER CONTACT BRASS
PLATED GOLD

CRIMP TUBE BRASS
PLATED NICKEL

INSULATOR TEFLON

SHRINK TUBE VERSAFIT OR EQUIVALENT

GASKET SILICONE RUBBER



73251-0213	73251-0211, 20 CAVITY TRAY
73251-0212	ONE PIECE 73251-0211 PER BAG
73251-0211	80 CAVITY TRAY
PART NO.	PACKAGING

PS-89675-3460	ELEC/MECH PERFORMANCE
MIL-STD-348A, FIG. 310.1	INTERFACE
SPECIFICATION	DESCRIPTION

CHG: UPDATE STRIP	EC NO: URF2012-0490 DRWN: WIENER 2012/02/15 CHKD: SSS 2012/02/15 APPR: WIENER 2012/02/15
DELETE	
ES-89675-1600	
PS WAS	
PS-89675-2900	
CONTACT MATERIAL	DESCRIPTION
WAS BECU	A5

QUALITY SYMBOLS	$\nabla=0$ $\nabla=0$															
GENERAL TOLERANCES (UNLESS SPECIFIED)	<table border="1"> <tr> <td></td> <td>mm</td> <td>INCH</td> </tr> <tr> <td>4 PLACES</td> <td>± .005</td> <td>± .0005</td> </tr> <tr> <td>3 PLACES</td> <td>± .005</td> <td>± .0005</td> </tr> <tr> <td>2 PLACES</td> <td>± .005</td> <td>± .0005</td> </tr> <tr> <td>1 PLACE</td> <td>± .005</td> <td>± .0005</td> </tr> </table> ANGULAR ± 2 °		mm	INCH	4 PLACES	± .005	± .0005	3 PLACES	± .005	± .0005	2 PLACES	± .005	± .0005	1 PLACE	± .005	± .0005
	mm	INCH														
4 PLACES	± .005	± .0005														
3 PLACES	± .005	± .0005														
2 PLACES	± .005	± .0005														
1 PLACE	± .005	± .0005														

DRAWN BY	MDE	DATE	1999/12/15
CHECKED BY	GMH	DATE	1999/12/15
APPROVED BY	GMH	DATE	1999/12/17
MATERIAL NO.	SEE TABLE		
DOCUMENT NO.	SD-73251-021		
SIZE	C		

DIMENSION STYLE	MM/IN
SCALE	AS SHOWN
DESIGN UNITS	METRIC
THIRD ANGLE PROJECTION	

TITLE		SMA PLUG, RA, 50 OHMS RG-316 CABLE GROUP SMA-PC/RA
MOLEX INCORPORATED		
SHEET NO.	1 OF 1	
THIS DRAWING CONTAINS INFORMATION THAT IS PROPRIETARY TO MOLEX INCORPORATED AND SHOULD NOT BE USED WITHOUT WRITTEN PERMISSION		