

INTERCONNECTS

SERIES 302, 330, 370, 380 DISCRETE INSULATED PINS

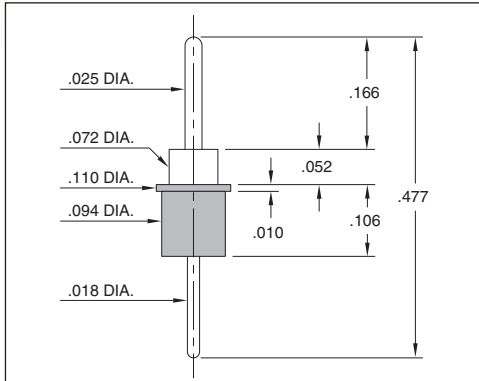


FIG. 1

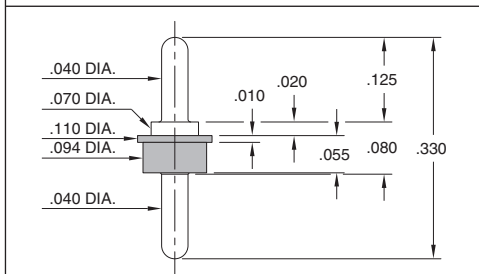


FIG. 2

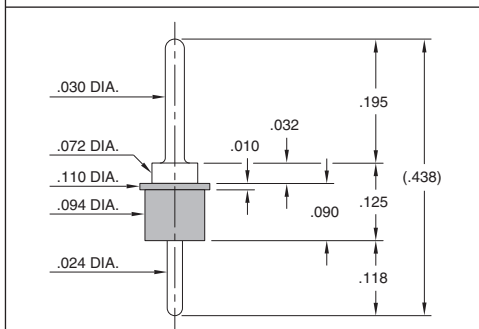


FIG. 3

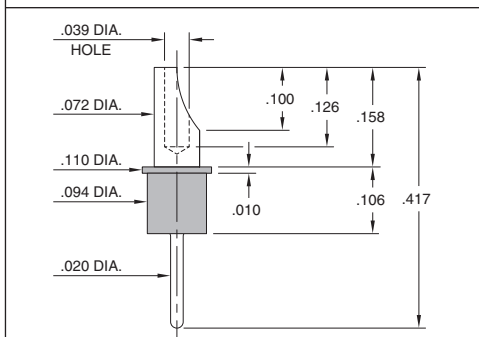
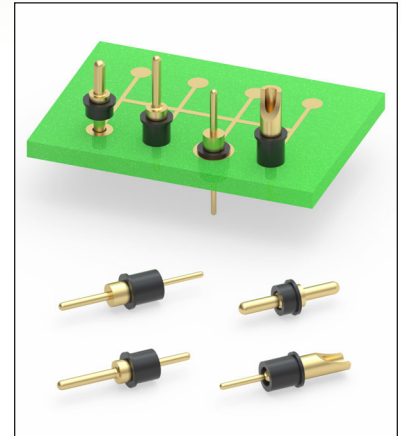


FIG. 4

- Series 302, 330, 370 and 380 insulated parts are offered in double tail & solder cup styles

302-10-001-00-900800 uses pin #0290-0
 330-10-001-00-770800 uses pin #3077-0
 370-10-001-00-070800 uses pin #7007-0
 380-10-001-00-000800 uses pin #8000-0
 See pages 162, 165, 215 and 216 for details

- Insulated terminals are used to electrically isolate single pin interconnects in an assembly. The plastic sleeve provides insulation of the terminal from nearby conductive components or for applications such as mounting through a metal panel or other non-insulated housing. The sleeve also facilitates the handling of small, individual terminals and can provide mechanical support for pins mounted on or through printed circuit boards
- Insulators are high temperature thermoplastic, suitable for most soldering operations



ORDERING INFORMATION

	Series 302...900800	Double tail Pin with Sleeve
FIG. 1	302-10-001-00-900800	
FIG. 2	Series 330...770800	Double tail Pin with Sleeve
FIG. 3	Series 370...070800	Double tail Pin with Sleeve
FIG. 4	Series 380...000800	Soldercup pin with Sleeve
	380-10-001-00-000800	

SPECIFICATIONS:

Insulating Sleeve tolerance: $\pm .003$

Packaging: Bulk



XX=Plating Code
See Below

For
Electrical, Mechanical
& Environmental Data,
See page 264

SPECIFY PLATING CODE XX=	10		
Pin Plating	10 μ " Au		

