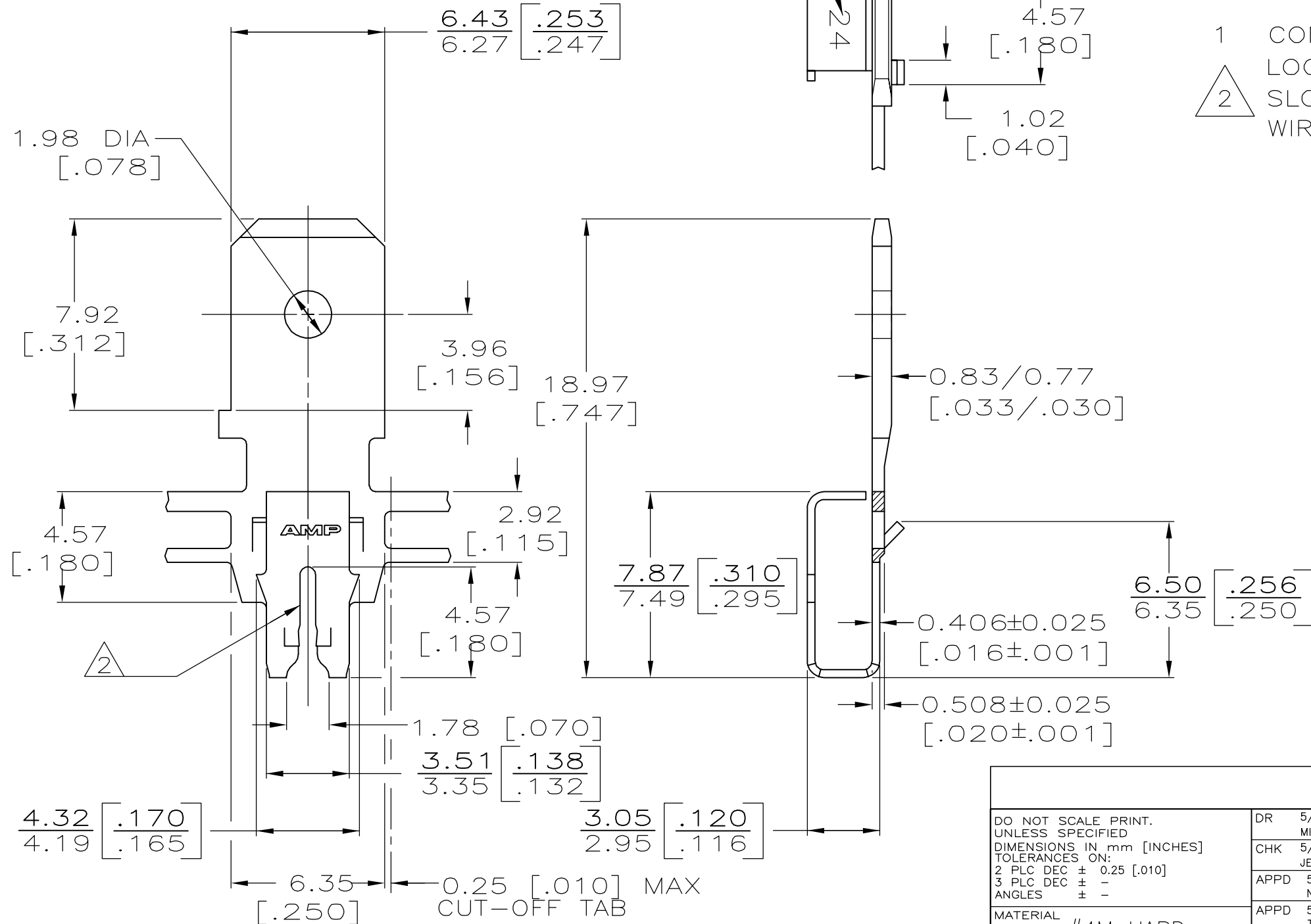


THIS DRAWING IS UNPUBLISHED. RELEASED FOR PUBLICATION ,19
 © COPYRIGHT 19 BY AMP INCORPORATED. ALL INTERNATIONAL RIGHTS RESERVED.

LOC	DIST	P	F	ZONE	LTR	DESCRIPTION	DATE	APPD
AF	50				B	REV PER ECR 06-010492	02OCT06	JR.KR

IDENTIFICATION NUMBER 24 FOR MAGNET WIRE RANGE



- 1 CONTINUOUS STRIP ON REELS WITH TERMINALS LOCATED ON 8.38 [.330] CENTERS.
- 2 SLOT TERMINATES SINGLE COPPER MAGNET WIRE WIRE RANGE: 0.91-1.13mm [#19-#17] AWG

METRIC

63614-1

PART NO

DO NOT SCALE PRINT. UNLESS SPECIFIED DIMENSIONS IN mm [INCHES] TOLERANCES ON: 2 PLC DEC ± 0.25 [.010] 3 PLC DEC ± - ANGLES ± -	DR 5/9/91 MICHAEL S. FEHER
	CHK 5/13/91 JEFF R. RUTH
	APPD 5/13/91 NELSON E. NEFF
	APPD 5/13/91 TERRY L. SHUTTER
MATERIAL #4M HARD PRE-MILLED BRASS	PRODUCT SPEC -
FINISH 0.002032 [.000080] MIN TIN PER MIL-T-10727	APPLICATION SPEC 114-2094
	WEIGHT -

AMP AMP Incorporated Harrisburg, PA 17105-3608		
NAME TAB, 6.35 [.250] FASTON,™ MAG-MATE™		
SIZE B	CAGE CODE 00779	DRAWING NO 63614
SCALE 5:1	SHEET 1 OF 1	