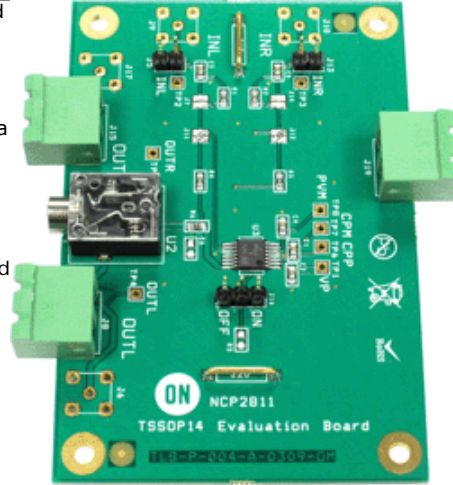




NCP2811ADTBARGEVB: Dual Audio Power Evaluation Board

Evaluation Board Description

NCP2811 is a dual audio power amplifier designed for portable communication device applications such as mobile phones. This board showcases the A version of this part in the TSSOP-14 package. This part is capable of delivering 27 mW of continuous average power into a 16 Ω load from a 2.7 V power supply with a THD+N of 1%. Based on the power supply delivered to the device, an internal power management block generates a symmetrical positive and negative voltage. Thus, the internal amplifiers provide outputs referenced to Ground. In this True Ground configuration, the two external heavy coupling capacitors can be removed. It offers significant space and cost savings compared to a typical stereo application.



Features and Applications

Features

- Pop and Click Noise Protection Circuitry.
- Ultra Low Current Shutdown Mode
- 2.7 V-5.0 V Operation
- Thermal Overload Protection Circuitry

Evaluation Board Information

Evaluation Board	Status	Compliance	Short Description	Parts Used	Action
NCP2811ADTBARGEVB	Active		Dual Audio Power Evaluation Board	NCP2811ADTBARGEVB	

Technical Documents

Type	Document Title	Document ID/Size	Rev
Eval Board: BOM	NCP2811ADTBARGEVB Bill of Materials ROHS Compliant	NCP2811ADTBARGEVB_BOM_ROHS.PDF - 152.0 KB	0
Eval Board: Gerber	NCP2811ADTBARGEVB Gerber Layout Files (Zip Format)	NCP2811ADTBARGEVB_GERBER.ZIP - 66.0 KB	0
Eval Board: Schematic	NCP2811ADTBARGEVB Schematic	NCP2811ADTBARGEVB_SCHEMATIC.PDF - 233.0 KB	0
Eval Board: Test Procedure	NCP2811ADTBARGEVB Test Procedure	NCP2811ADTBARGEVB_TEST_PROCEDURE.PDF - 146.0 KB	0

